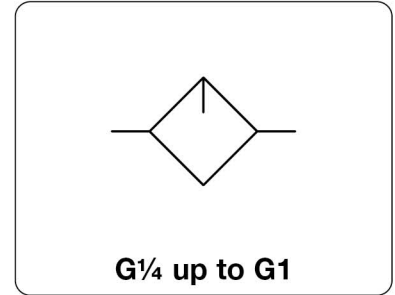


<b>Description</b>	Standard type mist lubricator of modular design with exchangeable insert kits. Can be interlocked with a filter or regulator without need for double nipples. A bypass valve and venturi nozzle guarantee low pressure drop and uniform lubrication of the compressed air. All "maxi" instruments are easy to take out of fixed piping by simply removing the two fastening bolts on the insert kits.		
<b>Bowl</b>	metal bowl with sight glass		
<b>Operating pressure</b>	max. 17 bar		
<b>Oil refilling</b>	oil refilling under pressure possible		
<b>Oil level indicator</b>	red ball inside the sight glass indicates oil level		
<b>Temperature range</b>	0 °C to 70 °C / 32 °F to 158 °F		
<b>Material</b>	Body: Bowl:	zinc die-cast zinc die-cast	Sight glass: Elastomer: polyurethane NBR/Buna-N



Dimensions			Bowl	Flow	Operating	Connection	Order
A	B	C	Design	rate	pressure	thread	number
mm	mm	mm	made of/with	m <sup>3</sup> /h*1	l/min*1	max. bar	G

"Maxi" lubricator				operating pressure max. 17 bar			L20		
89	229	170	metal/sight glass	0.3	108	1800	17	G <sup>1</sup> / <sub>4</sub>	L20-02W
					186	3100		G <sup>3</sup> / <sub>8</sub>	L20-03W
					336	5600		G <sup>1</sup> / <sub>2</sub>	L20-04W
111	229	170	metal/sight glass	0.3	420	7000	17	G <sup>3</sup> / <sub>4</sub>	L20-06W
					438	7300		G1	L20-08W



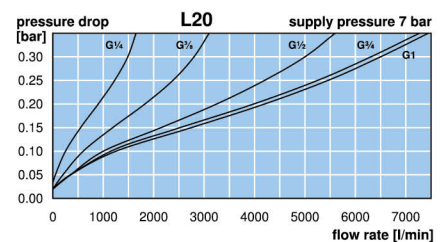
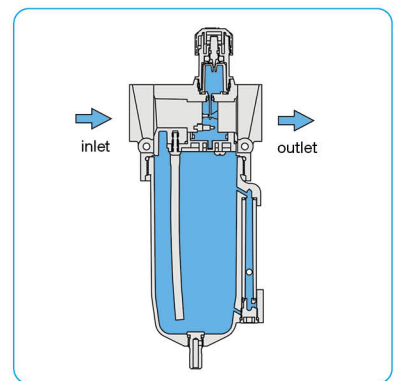
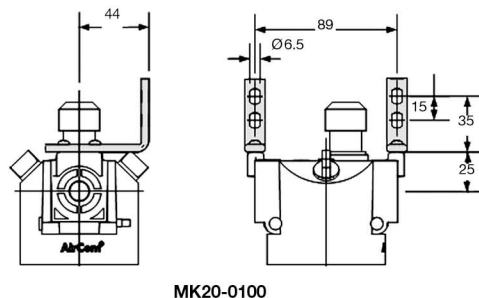
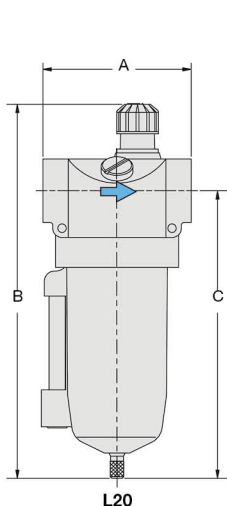
L20

### Special options, add the appropriate letter

NPT	connection thread	L20-0.WN
-----	-------------------	----------

### Accessories, enclosed

set of brackets	made of steel	MK20-0100
-----------------	---------------	-----------



\*1 at 7 bar operating pressure and 0.33 bar pressure drop

Extensions: see chapter for FRL service units  
Spare parts: see separate spare parts list

PDF CAD  
www.aircom.net

Order example:  
L20-02W